

EX-900RXL

LONG RANGE ACOUSTIC DEVICE

MADE IN KOREA

Max SPL **158** dB

Max Range **2.5** km

Weight **112** kg



Maximum Peak Output:	158 dB SPL @ 1 meter, A-weighted	Weight:	112 kgs
Communication Ranges:	2,500 m	Camera:	
Sound Projection:	+/- 15 Degrees at 1 kHz / -3 dB	Focal Length	4.44 - 142.6 mm
Frequency Response:	200 Hz to 9 kHz	Zoom	32x Optical / 16x Digital
Power Consumption:	MAX 400 WATT(PASSIVE) MAX 1,400 WATT(ACTIVE)	Angular Field of View	H: 2.23(T) to 62.8(W) V: 1.26(T) to 36.8(W)
Max Power:	800 W	Illumination (at F1.6)	C: 0.15 Lux / B&W: 0.015 Lux
Dimensions (W x H x D):	733 x 1,071 x 473 mm	Accessory Mounting Points:	Two mounting points for attaching accessories
		Materials of Construction:	Molded low smoke composite, Aluminum, Stainless hardware
		Power Input:	24 VDC / 220 VAC

The software Application Programming Interface enables systems integrators to quickly and easily develop applications that allow the EX-900RXL to receive position and tracking commands from other networked sensors. As part of an integrated system, the EX-900RXL can be programmed to respond to alarms and infrared, or integrated with radar to automatically respond to potential threats.

SALT SPRAY TEST



WATERPROOF



IP 67



IP 66



MIL-STD-810G



EX-900RXL

LONG RANGE ACOUSTIC DEVICE

MADE IN KOREA

The EX-900RXL is a powerful Remote Hailing Device that can be operated from A separate location and is the best means of off shore communication for maritime warning and deterrence activities. While it is not possible to have standard warning loudspeakers and microphone broadcasts in the environment of marine noise (wind, waves, engine sounds), the acoustic power and clarity of the EX-900RXL make this possible. Typical configurations include two EX-900RXL systems deployed to provide 360 degree coverage of a vessel, platform or other structure The separate control station is connected by Ethernet (TCP / IP) and an Audio signal cable to the system. When the launcher program runs automatically, after checking the video with the attached camera, users can set the target with PAN / TILT / ZOOM and shoot a powerful warning sound. The monitor connected to a PC is equipped with a touch screen function that controls the operating software by touching the monitor. Additional functionality can include integrated radar control, target tracking, Laser Range Finder and video recording.

STANDARD SYSTEM COMPONENTS

- Pan / Tilt System with Speaker Head Units (x1)
- 32x Optical Zoom Day Camera
- Operating Software
- Main Operating Controller
- Touch Monitor
- Microphone
- Joystick
- Power Distribution (8 Channel)
- Amplifier and Pre-Amplifier
- Video Recording Capability

OPTIONAL SYSTEM COMPONENTS

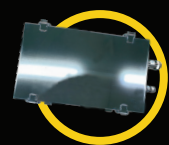
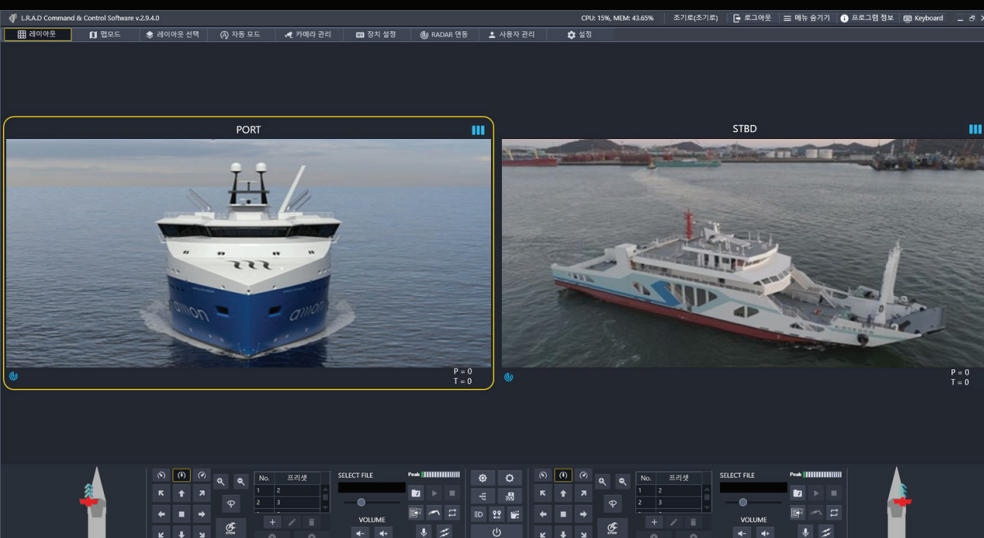
- Thermal Camera
- High Powered Searchlight(IR)
- Laser Range Finder
- Radar Interface (Auto Tracking)
- AC to DC Power Supply and Enclosure
- Local Outdoor Enclosure (Power Amplifier, Streamer)

ENVIRONMENTAL PERFORMANCE

Operating Temperature	MIL-STD-810G -32 °C to 55 °C * SPEAKER CERTIFICATE
Rain	Method 506.5, Procedure I Rain Rate: 1.7 mm/min (4 in/hr) Droplet Size: 0.5 - 4.5 mm Wind Velocity: 18 m/s (40 mph)
Humidity	95 % Relative Humidity at 60 °C
IP Protection	PAN TILT DRIVER : IP 66 SPEAKER : IP 67

PTZ PERFORMANCE

Pan Speed	0.1 to 30 ° / second
Tilt Speed	0.1 to 20 ° / second
Pan Angle Range	+/- 175 ° (350 ° total coverage) n x 360 ° (Optional)
Tilt Angle Range	+/- 90 ° (180 ° total coverage)



AC to DC Converter



High Powered Searchlight



Laser Range Finder